

AUTOMATION,
EVEN QUALITY, ALSO NEEDS
TO PERFORM BETTER !





Mission

We believe in fulfilling your requirement, by providing world class solutions that conform to highest quality, offer necessary flexibility and ensure excellent cost-effectiveness.

Know Us

Konem Solutions incorporated in 2004, is a Pune based industrial automation services and products integrator, involved in developing solutions for SPM's, using PLC/PC based control panel systems. Also an integrator for the latest Machine Vision technology products, or "Smart Cameras", to provide solutions to the day to day challenges being faced by plant engineers in the manufacturing industry.

Since automation reduces the overall cost of production and facilitates greater reliability and output, every concern wants to reap the fruits of factory automation. With its excellent knowledge and core competencies in a broad range of automation expertise, Konem Solutions, introduces itself as a trustworthy concern, offering a wide range of machine vision system and industrial automation services and products under one umbrella. The company is a group of expert and experienced technocrats to deliver unmatched products and services in the arena of industrial automation.

Being a single-source systems integration and specialized software engineering services firm, the

Speciality in :

- ☐ **ASSEMBLY LINE AUTOMATION**
- ☐ **MACHINE VISION SYSTEM**
- ☐ **ELECTRICAL AUTOMATION CONTROL PANEL**
- ☐ **INDUSTRIAL SOFTWARE DEVELOPMENT USING LABVIEW / MATLAB**
- ☐ **NIRIKSHAK - PRODUCTION MONITORING & REPORTING SYSTEM**
- ☐ **TEST AND MEASUREMENT**
- ☐ **MOTION CONTROL**

company offers a wide range of services such as systems integration, project planning & consulting, SPM software's, machine vision Systems etc. We are specialized in industrial automation consultancy, implementation of PLC systems SCADA, HMI customized PC based data acquisition & control systems and providing total solutions to factory and process automation. Our versatile experience of more than 4 years enables us to carve a special niche for ourselves in today's competitive arena.

Quality Policy

We are committed to providing the best solutions, fulfilling customer requirements and enabling customers improve their efficiency and productivity. With an effective and continually improving process, we aim to maximize the overall value to all.

Founder

Mr. Vihang Patil, B.E Instrumentation 1999,

M.S. Automation & Controls USA 2002. Has an extensive experience in Automation and Controls. After his postgraduate in Automation decided to return back to India and start the firm to provide solutions and services to our Motherland. Versatile in Business Management and technical skills, those are necessary to run a successful organization.

MACHINE VISION SYSTEM

- Proprietary Developed Machine Vision Software using PC
- Smart/PC Less Camera
 - Useful in Pattern Matching
 - Color Recognition
 - Finding missing parts
 - Dimensions checking
 - Sorting



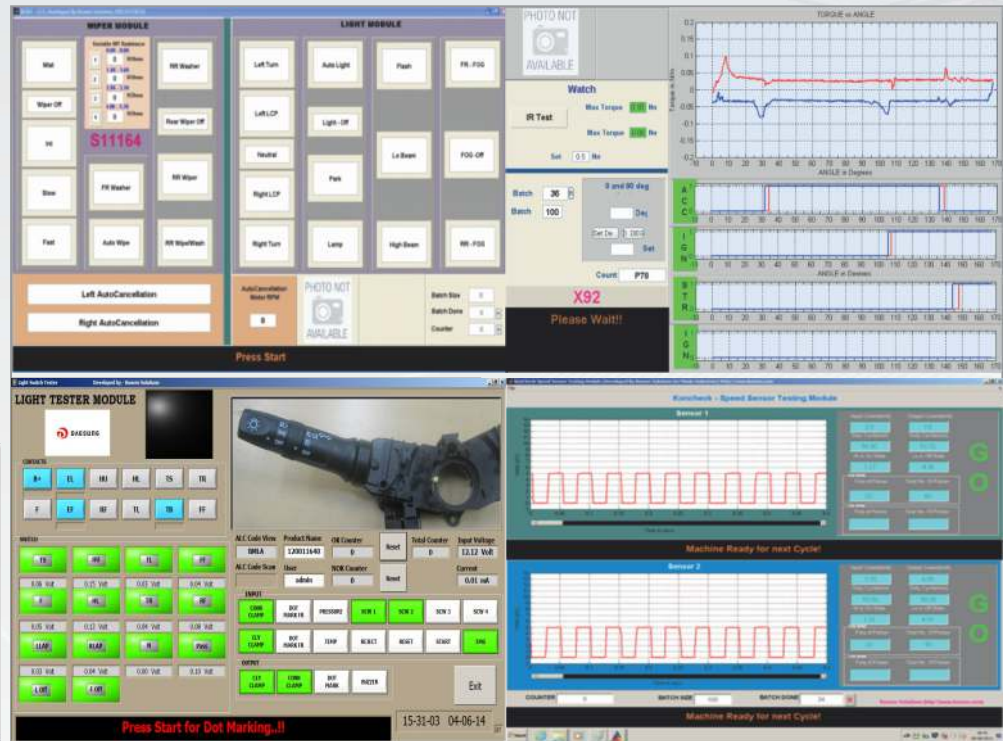
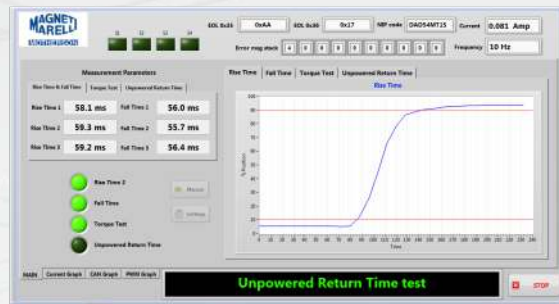
ELECTRICAL AUTOMATION CONTROL PANEL

- PLC based Automation Control Panel
- Relay Based Control Panel
- Contractor based Control Panel
- Data Acquisition Control Panel



INDUSTRIAL SOFTWARE DEVELOPMENT USING LABVIEW / MATLAB

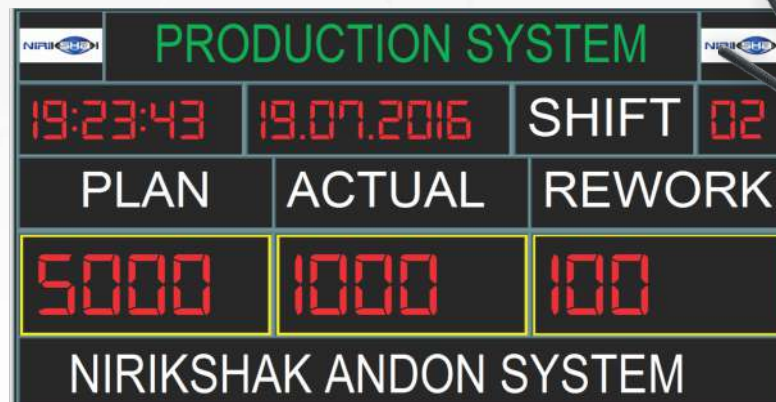
- Customized Industrial Software's using LABVIEW / MATLAB as tool
- Graphical visualization using latest technology
- Report Generation / Data Logging
- Controlling Monitoring & Analysis



NIRIKSHAK - PRODUCTION MONITORING & REPORTING SYSTEM

Features of Andon

- Fault Identification
- Visual Production Monitoring
- Data Logging
- Reporting - by SMS or via Email
- User Configurable



TEST AND MEASUREMENT

- Automation using DELTA/MITSUBISHI PLC
- Motion Control using DELTA / PANASONIC / MITSUBISHI Servo/Stepper/AC/Synchronous Motors
- DAQ systems of LABJACK / NI / DATA TRANSLATION
- Customized Automation Panels
- Field Instruments Integration.
(PANEL METERS / COUNTERS / PROCESS INDICATORS)
- RELAY/CONTACTOR/PLC Logic Implementation



MOTION CONTROL

- PLC & HMI based integration
- Software Development Using Labview & Matlab
- Integration of NI based systems, Virtual Instrumentation, Integration of 3rd party Measurement & Control Devices
- Stepper Motor control
- Servo Motor Control
- AC/DC Motor Control
- VFD Control



ASSEMBLY LINE AUTOMATION

- Child Part Assembly Stations
- End of Line Testing & Measurement Machines
- Durability & Endurance Test Machines
- Sorting Machines
- Robotic Pick & Place Machines
- Product Validation/ Firewall/ Mock-up/ Burn test Machines
- Machine Manufacturing Using Pneumatics, Hydraulics & Motorised Actuators



Services Offered

- Systems Integration
- Project Planning and Consulting
- Machine Vision System Integration

- **EYEKON**

EyeKon Machine vision system is an electronic alternative to human or manual inspection that benefits companies in all aspects of quality assurance by identifying and eliminating defective products reliably. These challenges addressed include improving quality; increasing efficiency; managing costs; reducing scrap; decreasing downtime; and boosting capacity.

- **SPM, Robotics integration**

- **KONCHECK**

KonCheck is a PLC or PC based data acquisition and control software solution for SPM's, designed and customized according to the user requirement used in Quality Assurance to do mundane tasks like testing products that will conform to its rated standards.

Manufacturing Capabilities

Our sound infrastructural set-up enables us to execute the following tasks efficiently:

- Designing, manufacturing, installation and commissioning of automated processes, special purposes applications and machines.
- PLC, SCADA, HMI, customized PC based DAC systems, Machine Vision and Smart Camera Systems.
- Electrical panel - design, fabrication, assembly and installation.
- Generation of electrical documentation, drawings by using CAD.
- Customized PC based Data Acquisition (DAQ's) and control systems including vision based inspection equipments.
- Generation of documentation/ drawings- CAD.
- Retrofitting and re-conditioning of old machines and up-gradation.
- Offshore/ onsite- designing, engineering and coding support.

visit : www.konem.com

KONEM PVT. LTD.

Our Strength

The following are the main features that provide us a leading edge over other players operating in our domain:

- Right combination of personnel, machines—the total operating system
- Meeting the exacting requirements of the customers and standards of the industry
- Production unit installed with the latest modern technology and facilities
- Regular investment to promote knowledge in the area of technical development, research and production
- Competitive prices—the best price offered in the market.

Some of our Highly Reputed Clients List

- **Mindarika Pvt. Ltd.**
- **Minda Switch Division**
- **Minda Lighting Division**
- **Bajaj Auto LTD.**
- **Knorr Bremse (Tata Auto Comp)**
- **Huf India Pvt. Ltd.**
- **Lear Corporation**
- **Tata Motor Ltd.**
- **Mahindra Ltd.**
- **Daesung Pvt. Ltd.**
- **GKN Sinter Metals**
- **Varroc Group of Companies**
- **Yapp India Automotive System Pvt. Ltd.**
- **Portescap India Pvt. Ltd.**
- **Pricol Pvt. Ltd.**
- **Magneti Marelli Motherson**

